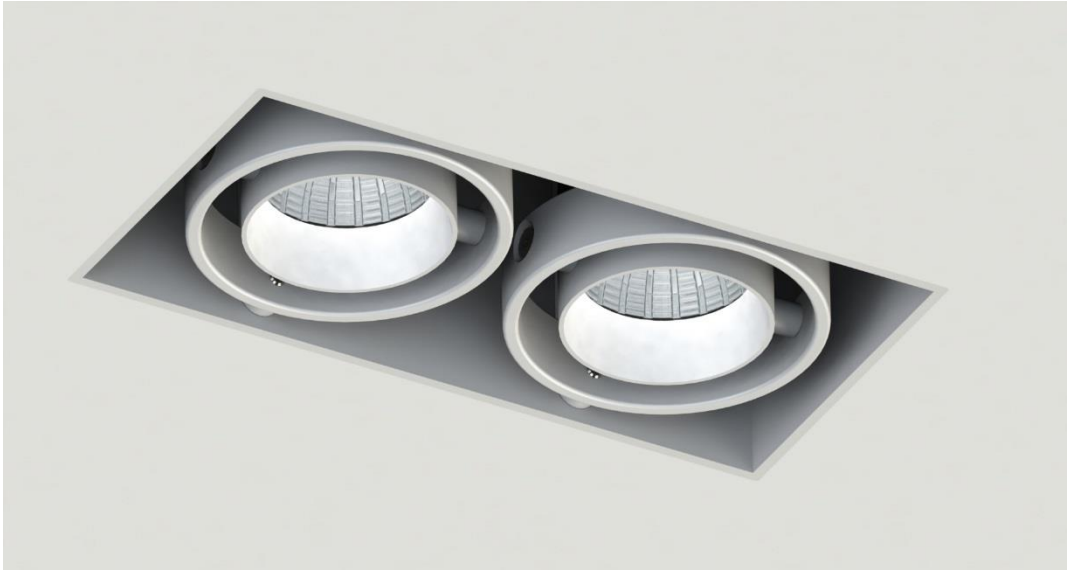
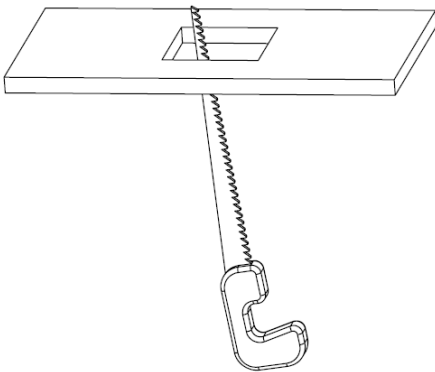


DIVA TRIMLESS INSTALLATION INSTRUCTIONS



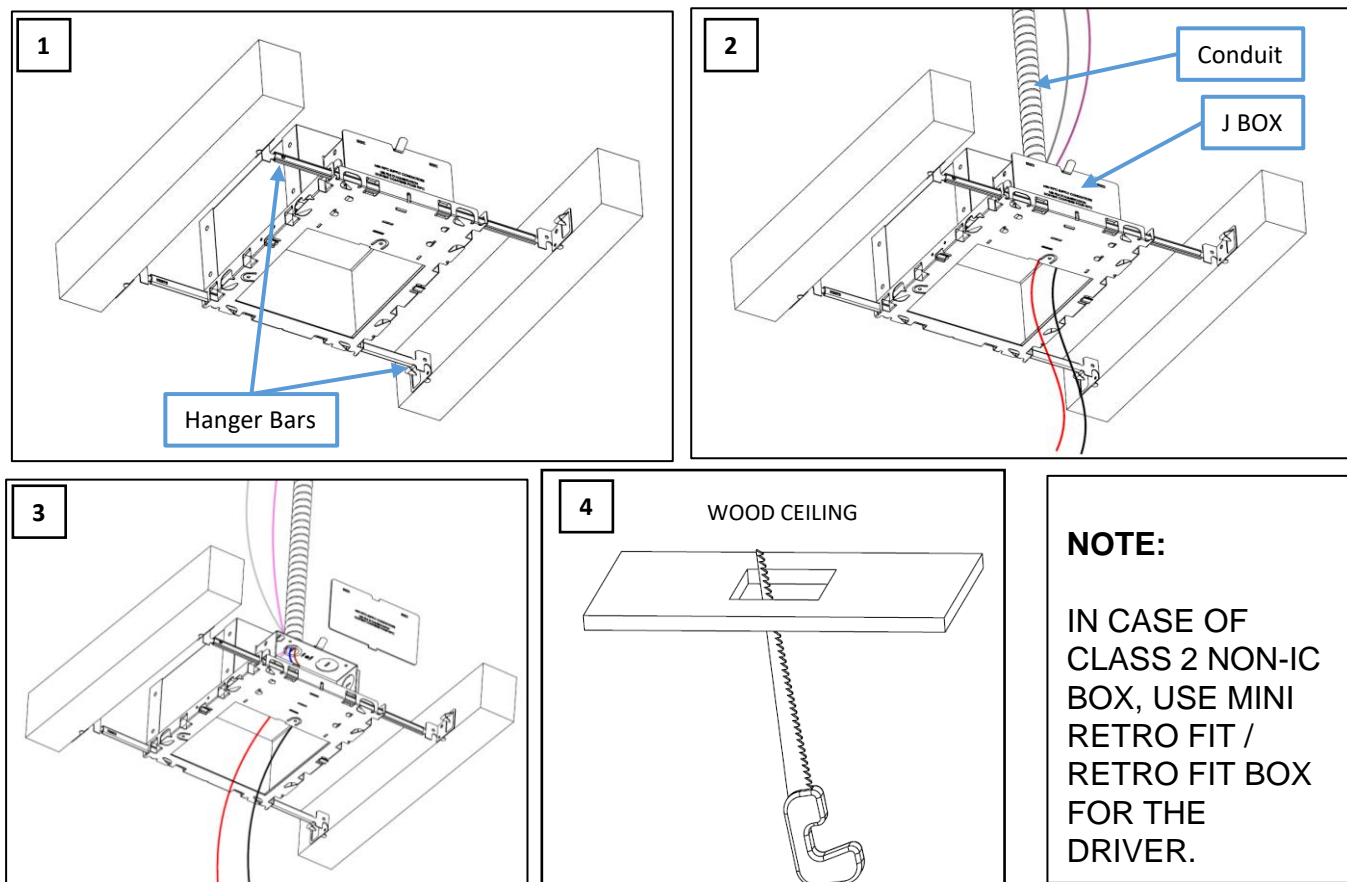
WARNING - RISK OF FIRE AND ELECTRICAL SHOCK. FIXTURE MUST BE INSTALLED BY A QUALIFIED ELECTRICIAN ONLY. FIXTURE IS INTENDED FOR INSTALLATION IN ACCORDANCE WITH THE NATIONAL ELECTRICAL CODE, LOCAL AND FEDERAL SPECIFICATIONS. DISCONNECT POWER AT ELECTRICAL PANEL BEFORE SERVICING. RETAIN THESE INSTRUCTIONS FOR MAINTENANCE REFERENCE.

CUTOUT TABLE



FIXTURE	CUTOUT
DIVA 2TS	3.31" X 3.31" / 84mm X 84mm
DIVA 2TD	3.31" X 6.3" / 84mm X 160mm
DIVA 2TT	3.31" X 9.29" / 84mm X 236mm
DIVA 2TQ	6.22" X 6.22" / 158mm X 158mm
DIVA 3TS	4.25" X 4.25" / 108mm X 108mm
DIVA 3TD	4.25" X 8.19" / 108mm X 208mm
DIVA 3TT	4.25" X 12.13" / 108mm X 308mm
DIVA 3TQ	8.19" X 8.19" / 208mm X 208mm
DIVA 5TS	6.22" X 6.22" / 158mm X 158mm
DIVA 5TD	6.22" X 12.13" / 158mm X 308mm
DIVA 5TT	6.22" X 18.03" / 158mm X 458mm
DIVA 5TQ	12.13" X 12.13" / 308mm X 308mm

IC / NON-IC BOX INSTALLATION (NEW CONSTRUCTION)



NOTE:

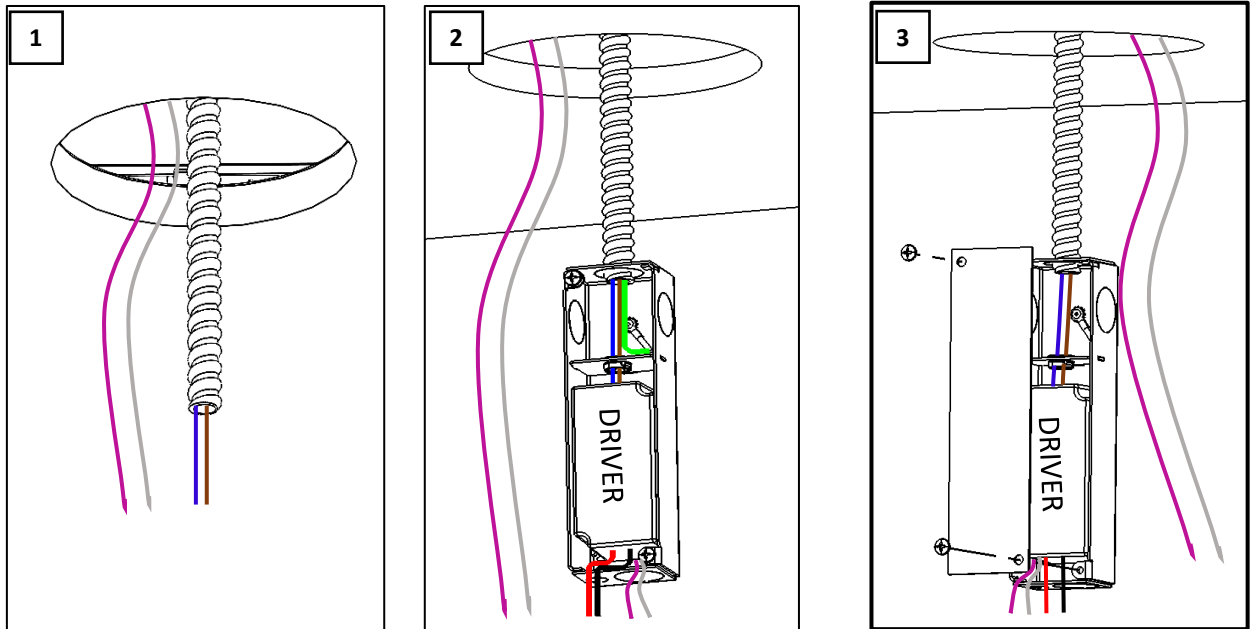
- IN CASE OF ELV, NON-DIM AND BLUETOOTH DRIVER, PURPLE & GRAY WIRES ARE ABSENT.
- RUNNING 0-10V DIMMING WIRES IN THE SAME CONDUIT AS LINE VOLTAGE IS NOT RECOMMENDED. THEY NEED TO BE RAN SEPARATELY OR AT LEAST SEPARATED BY A CONTINUOUS BARRIER.

NOTE:

IN CASE OF CLASS 2 NON-IC BOX, USE MINI RETRO FIT / RETRO FIT BOX FOR THE DRIVER.

1. INSTALL IC RATED BOX USING HANGER BARS ABOVE THE CEILING. (FIGURE 1).
2. KNOCK OUT A HOLE IN THE J BOX AND RUN THE CONDUIT THROUGH IT. (FIGURE 2).
3. OPEN THE J BOX COVER PLATE AND PLACE THE DRIVER INSIDE THE J BOX AND CONNECT TO THE POWER LINES PULLED THROUGH THE CONDUIT. (FIGURE 3)
4. IF IT IS A 0-10V DRIVER, CONNECT THE WIRE (PURPLE AND GRAY) TO THE DIMMER MODULE. AND RUN THE LOW VOLTAGE WIRE (RED & BLACK) THROUGH THE IC BOX, OUT THROUGH THE OPENING BEFORE INSTALLING THE DRYWALL CEILING. (FIGURE 3)
5. CUT A HOLE IN THE WOODEN CEILING USING THE CUT-OUT TABLE AS A REFERENCE. CNC MILLING CUT IS STRONGLY ADVISED. (FIGURE 4)

MINI RETROFIT/ RETROFIT BOX INSTALLATION

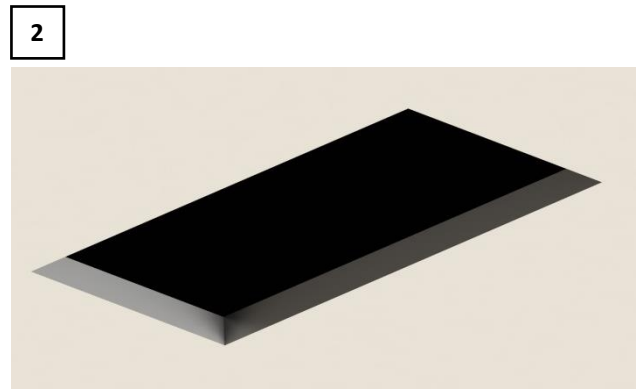
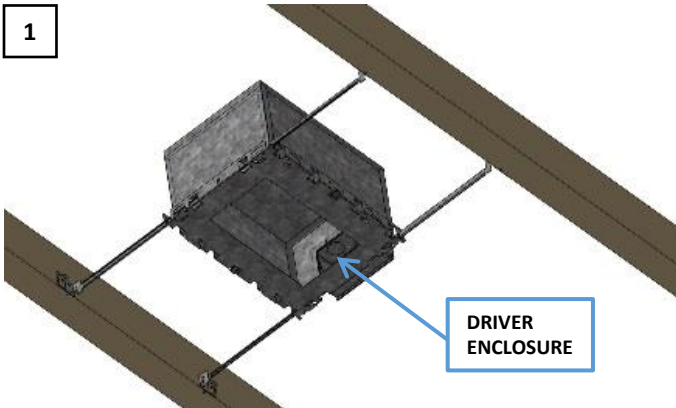


NOTE:

- IN CASE OF ELV, NON-DIM AND BLUETOOTH DRIVER, PURPLE & GRAY WIRES ARE ABSENT.
- RUNNING 0-10V DIMMING WIRES IN THE SAME CONDUIT AS LINE VOLTAGE IS NOT RECOMMENDED. THEY NEED TO BE RAN SEPARATELY OR AT LEAST SEPARATED BY A CONTINUOUS BARRIER.

1. CUT A HOLE IN THE CEILING DRYWALL AS PER THE CUT-OUT TABLE. ATTACH THE DRY WALL CEILING AND FINISH. MAKE SURE THE FLEXIBLE CONDUIT (RED & BLACK) AND DIMMING WIRES (PURPLE & GRAY) FROM THE DIMMER MODULE MUST HANG OUT SLIGHTLY FROM THE OPENING. (FIGURE 1)
2. REMOVE COVER OF THE RETROFIT BOX, KNOCK OUT AN APPROPRIATE SIZED OPENING PER THE CONDUIT BEING USED. ATTACH THE CONDUIT TO THE RETROFIT BOX USING A SUITABLE GROMMET, CONNECT THE GREEN GROUND WIRE FROM THE RETROFIT BOX TO THE GROUND WIRE FROM THE CEILING. CONNECT POWER SUPPLY WIRES FROM THE DRIVER TO THE MAIN LINE WIRES ON THE CEILING. BLUE TO NEUTRAL AND BROWN TO LINE. (FIGURE 2)
3. IF USING A 0-10V DRIVER, CONNECT THE WIRES (PURPLE & GRAY) TO THE WIRE COMING FROM THE DIMMER MODULE USING THE WAGO.
4. ATTACH RETROFIT BOX COVER USING THE PROVIDED TWO SCREWS. (FIGURE 3)

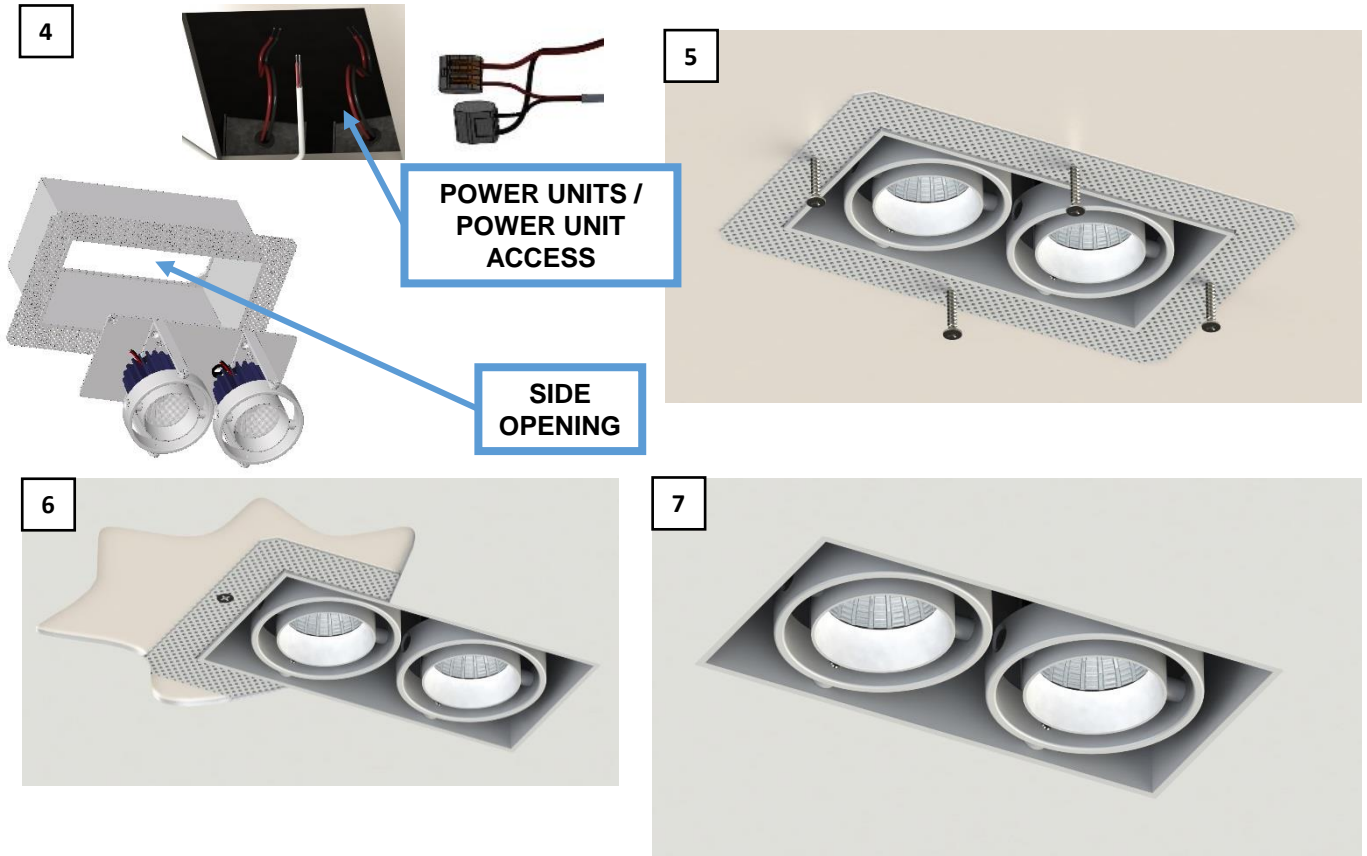
FIXTURE INSTALLATION



-
1. IF USING AN IC BOX, INSTALL USING THE HANGER BARS PROVIDED. (FIGURE 1)
 2. CUT OUT IN CEILING PER CUT OUT TABLE OR USE THE IC BOX AS A GUIDE IF AVAILABLE. MAKE SURE CONDUIT FOR POWER UNITS IS ACCESSIBLE AFTER CUTTING OPENING IN CEILING. (FIGURE 2)
 3. INSTALL THE POWER UNIT CONNECTING LINE VOLTAGE WIRES TO POWER SUPPLY. GROUND TO GREEN WIRE, WHITE/BLUE TO NEUTRAL LINE WIRE AND BLACK/BROWN TO HOT LINE WIRE.

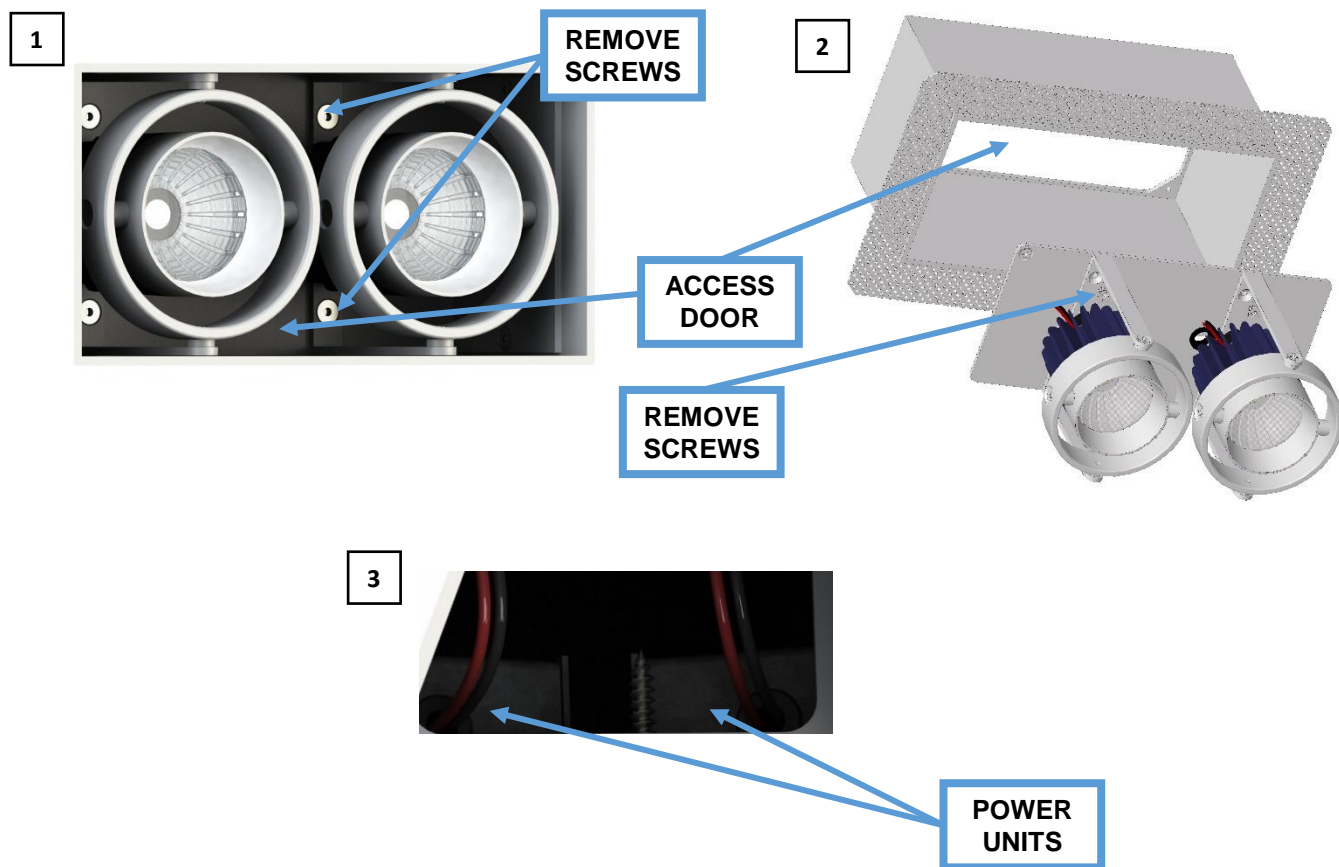
NOTE: DIVA 2TS - DIVA 2TD –DIVA 2TT MUST BE HAVE THE DRIVER REMOTELY INSTALLED. RIVER MAINTENANCE SHALL BE PERFORMED AT THIS LOCATION SINCE THE DRIVERS ARE NOT ACCESSIBLE THROUGH THE FIXTURE.

FIXTURE INSTALLATION



5. CONNECT EACH PAIR (RED-BLACK) OF LOW VOLTAGE WIRES TO DRIVER USING PROVIDED CONNECTORS. FIGURE 3 SHOWS THE INFORMATION ABOUT THE DRIVER QUANTITY AND SPECIFICATIONS.
6. CONNECT RED TO RED AND BLACK TO BLACK (FIGURE 4)
7. INSERT FIXTURE INTO THE OPENING AND SECURE TO THE CEILING USING APPROPRIATE SCREWS AND TAPE.
8. APPLY MUD MATERIAL TO THE PERFORATED SHEET. (FIGURE 6)
9. TURN POWER BACK ON TO THE FIXTURE AND ORIENT THE LIGHT ENGINES TO ACHIEVE THE DESIRED LIGHT DISTRIBUTION. (FIGURE 7)

FIXTURE MAINTENANCE



1. REMOVE GIMBALS ASSEMBLY BY REMOVING SCREWS . (FIGURE 1)
2. PULL OUT THE ACCESS DOOR/LIGHT SUPPORT TO REMOVE AND ACCESS DRIVERS. (FIGURE 2)
3. PULL POWER UNITS OUT THROUGH THE OPENING TO ACCESS WIRING AND DRIVERS. (FIGURE 3)
4. WHEN FINISHED WITH MAINTENANCE, RE-ATTACH WITH THE SCREWS THE ACCESS DOOR/LIGHT SUPPORT WHERE ARE MOUNTED LIGHT ENGINES WITH YOKES.